

### Vessel Particulars

Owners	Sea-Cargo Skips AS
Managing Owners	Sea-Cargo AS
Built	2010
Builder	Bharati Shipyard Ltd.
Flag	Bahamas
Class	DNV
Service Speed (abt)	16 knts
Main Engine	4500 kw Wärtsilä
Consumption	15 mt/day, IFO 380
Communication	GSM phone and Fax,E-mail

### Main Dimensions

Deadweight	5.000	mts
Draught (SW)	6,00	m
Length overall	119,00	m
Moulded Breadth	18,00	m

### Cargo Capacities

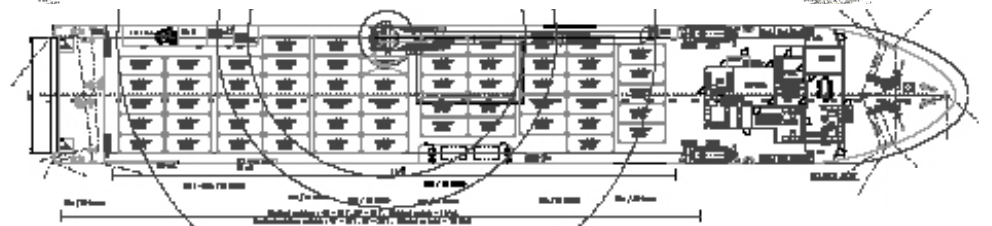
Double skinned / boxshaped

Position :	TEU	Lane m.	Deck Area	Free Height
Weather deck	118	—	—	—
Main deck	—	500	1320m <sup>2</sup>	4,80
Tween deck	—	—	1050m <sup>2</sup>	2,40
Lower hold	—	—	800m <sup>2</sup>	2,40

### Cargo Handling Equipment

Side door with 2 side lifts, both serving ro/ro deck, main deck and lower hold, capacity: 10 tons SWL each  
 Stern ramp serving ro/ro deck. Weatherdeck suitable for containers and project cargo.

Cranecapacity: Knocle crane 50tons SWL serving entire weatherdeck



SEA-CARGO AS  
 P O Box 353, Nesttun  
 N-5853 Bergen  
 Tel +47 55 10 84 84  
 Fax +47 55 91 22 33  
 operation@sea-cargo.no  
 www.sea-cargo.no